

High School General Information

This course guide gives you information about all courses that may be offered in Bellevue. It also includes information about specific courses offered in Bellevue's two schools of choice that serve students in grades 6-12, Big Picture School and International School. These schools may package courses under different names, may integrate and combine courses, and may change the sequence of courses, but its curriculum will still satisfy the same basic requirements as other district courses.

Bellevue Big Picture School
(425) 456-7800

Bellevue High
(425) 456-7000

Interlake High
(425) 456-7200

International School
(425) 456-6500

Newport High
(425) 456-7400

Sammamish High
(425) 456-7600

SCHEDULING

We hope this guide will answer all of your questions as you decide what high school courses to register for next year. The courses in this guide will be offered next year only if enough students at each school register this spring to fill a class. So, it is very important that you think carefully about your choices now, including alternative selections, so that the courses you want will be available next year at your school. Another reason for students and parents to take spring registration very seriously is that students will be committed to their schedule. Changing student schedules will be done only under exceptional circumstances. Desire to have a common lunch with a friend, to be in the same class with a friend, to have a different teacher, preference for a different elective, or similar personal preferences will not be accepted as reasons for schedule changes. The choices you make now will determine your schedule for the entire school year. If you cannot find the answers you need, or if you would like to have individual help in planning your program, please contact an administrator or counselor at your school.

COUNSELING PROGRAM

All school counseling programs will include the following elements: guidance curriculum, individual student planning, responsive services, and systems support.

The focus of the Counseling Department is to help students with academic and career planning and to foster personal exploration, self-awareness, and social growth. Students are encouraged to set realistic yet challenging goals, to make responsible decisions, to understand the consequences of their actions, and to learn to self-advocate.

High School General Information

Students should contact a counselor if they have questions about transitions between schools, registration, course selection, interpretation and use of test results, or graduation requirements. High school counselors assist students with academic, career, college, and personal questions. Visit or call the counseling center or career center to make an appointment with your counselor.

Counselors offer a wide variety of services, resources, and activities:

- » Visit high schools during the prior school year to provide a smooth transition from middle school to high school
- » Assist students in planning, selecting and successfully completing middle and high school courses, completing the High School and Beyond Plan, and meeting all requirements for high school graduation
- » Teach students (in classrooms) about the intricacies of college admission, how to develop and sustain study habits and develop personal/social support systems
- » Provide students and families with information about course selection/ registration, college admissions testing, financial aid, socio-emotional issues, and mental health resources. Facilitate outreach with community mental health support agencies
- » Monitor students' academic progress and assist student in developing plans of support so that they are successful in resolving problems in doing well in school and classes
- » Provide a program to prepare students for an education beyond high school
- » Develop and lead groups with topics ranging from dating, relationships, and self-esteem, to academic improvement

- » Assist students with issues, academic or personal, that are or may be interfering with academic performance

The College and Career Advisors provide college and career guidance through individual appointments, workshops, speakers, and panel discussions. College and Career Advisors:

- » Support students with college applications, college essays, FAFSA/WAFSA and scholarship assistance;
- » Connect students to community resources and events;
- » Assist students with career exploration through connecting them with speakers, attending field trips, workshops, and promoting employer/internship opportunities
- » Assist students with completion of the High School and Beyond Plan (HSBP)

INFORMATION FOR HIGH SCHOOL STUDENTS

FULL SCHEDULE REQUIREMENT

Full-time high school students must be enrolled in all seven periods at a Bellevue School District school in grades 9 and 10 and enrolled in at least six contiguous periods in grades 11 and 12. Students who are in their fifth year of high school and enrolled in grade 12 may enroll in less than six periods that do not need to be contiguous.

Full-time running start students must be enrolled in a minimum of 15 college credits.

COMMUNITY SERVICE GRADUATION REQUIREMENT

Students must earn forty hours of Community Service as one of their graduation requirements. Students may begin to earn these hours once they complete their eighth grade year. The hours may be earned all at one

time, or in any manner that meets the student's schedule, during his/her high school years, but must be completed prior to the student's participation in a commencement ceremony and the granting of a diploma.

Community Service is any service that is done for non-profit agencies and organizations and/or religious organizations. School service is also included. For activities that occur over more than one day, a maximum of 10 hours/day is allowed for the 40 hours of community service required for graduation. All students will record their community service hours in x2Vol, which is housed in the Naviance Program.

2.0 GRADE POINT AVERAGE GRADUATION REQUIREMENT

All students are expected to earn the necessary credits for graduation with a minimum of a 2.0 cumulative grade point average (GPA). Athletic/activity eligibility also requires a 2.0 GPA.

STATE GRADUATION PATHWAY REQUIREMENT

In order to meet Washington state graduation requirements, high school students must: earn all required state and local credits, complete a high school and beyond plan, and show math and literacy competency through an approved Smarter Balanced Assessment (SBA).

There are many ways to meet the Graduation Pathway requirement including one or more of the following:

- Meet or exceed SBA scores in ELA and Math
- Complete and qualify for college credit in a dual credit course.
- Earn credit in a high school transition course.
- Earn high school credit with a C+ or better or score 3 or higher on an AP exam or in an IB course earn a C+ or better or score a 4 or higher on the IB exam.

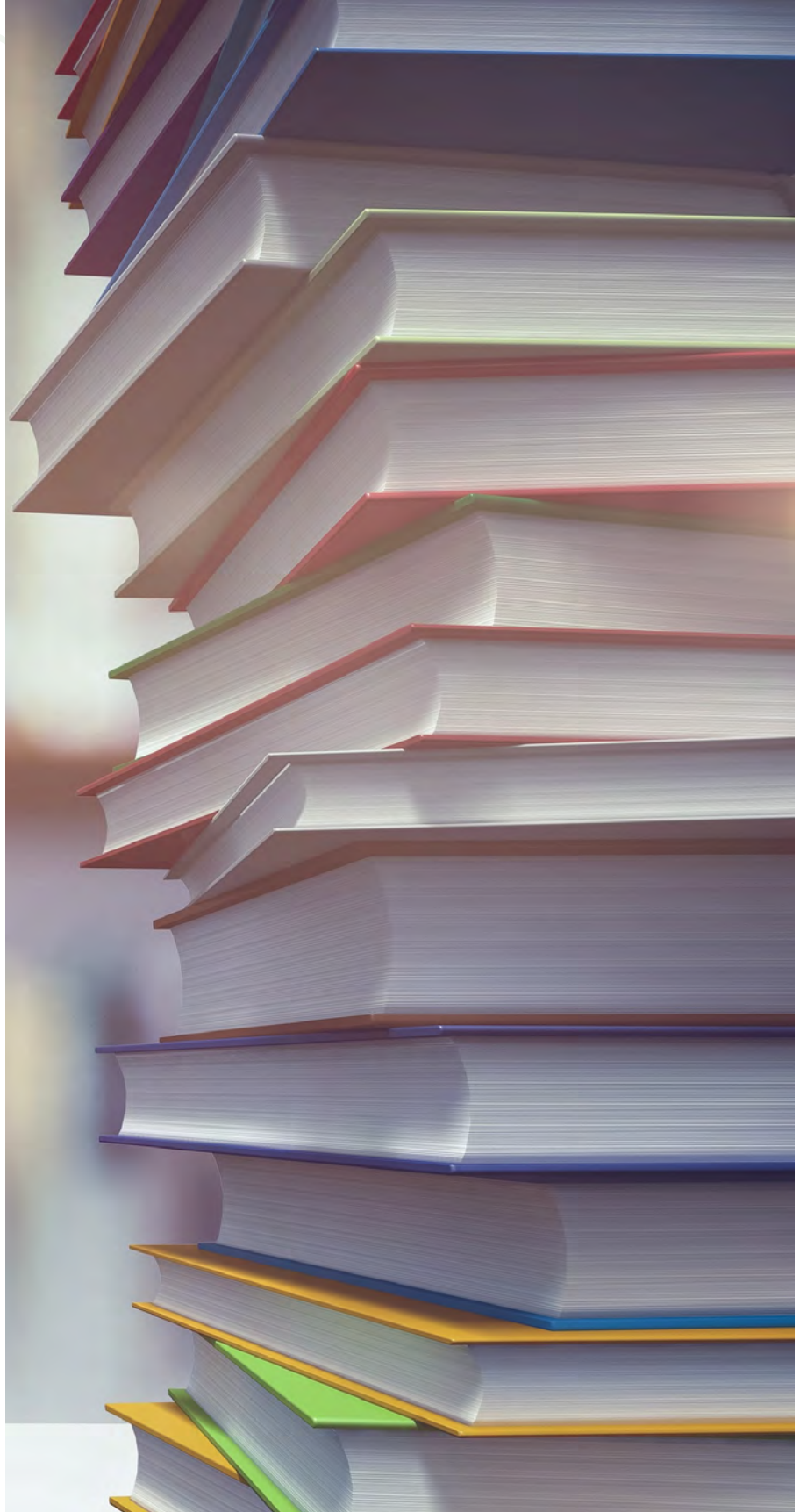
High School General Information

- E. Meet or exceed standard on the ACT or SAT
- F. Meet standard on the ASVAB
- G. Complete a sequence of CTE courses based on your High School & Beyond Plan

Please see your counselor for more details.

HIGH SCHOOL AND BEYOND PLAN

Students will design and document their post-high school plans by completing the High School and Beyond Plan in Naviance.



High School General Information

GRADUATION CREDIT REQUIREMENTS

BSD CREDIT REQUIREMENTS		
SUBJECT	SEMESTERS	CREDITS
English	8	4.0
Mathematics	6	3.0
Social Studies	7	3.5
Science *	6	3.0
Career & Technical Education	2	1.0
Fine Arts (Drama, Music, Visual Art) **	4	2.0
Health	1	0.5
Physical Education	3	1.5
World Language ***	4	2.0
Electives	7	3.5
TOTAL	48	24

* The Science requirement of 3.0 credits must include two lab classes.

** The Fine Arts requirement of 2.0 credits can include 1 credit of Personalized Pathway Requirement (PPR).

*** For World Language, both credits can be PPR.

The 3rd credit of science and the 3rd credit of math are chosen by the student and based on the student's interest and High School and Beyond Plan, and approved by the parent or guardian, or, if the parent or guardian is unavailable or does not indicate a preference, the school counselor or principal.

Personalized Pathway Requirement (PPR) are related courses that lead to a specific post high school career or educational outcome chosen by the student based on the student's interests and High School and Beyond Plan, that may include Career and Technical Education and are intended to provide a focus for the student's learning. Students may have up to 3 PPR credits.

Some CTE courses are cross credited with other subject areas. Please see the CTE Course Equivalency Credits table for further information.

NON CREDIT REQUIREMENTS:

- » Washington State History
- » High School and Beyond Plan
- » 40 hours of Community Service
- » Students must earn a 2.0 cumulative Grade Point Average

STATE ASSESSMENTS:

Students are expected to take all state assessment including the SBA for ELA and Math. Students meeting the standard will also meet the Graduation Pathway requirement for graduation.

COLLEGE/UNIVERSITY ENTRANCE REQUIREMENTS

Colleges and universities have different general requirements unique to each institution. However, there are some common requirements for each type of college or university. Although specific requirements may vary among institutions, the following minimum guidelines exist:

IN-STATE PUBLIC UNIVERSITIES

English 4 years

Includes 3 credits of college preparatory COMPOSITION & LITERATURE.

Mathematics 4 years

Algebra 2 credit is the minimum level for college entrance; a math credit must be earned during senior year.

Science 2-3 years

Includes 1 credit chemistry or physics. 2 credits must be lab sciences

Social Studies (History or other Social Sciences) 3 years

World Language 2 years

Consecutive study (2 credits) of same language: World language, Native American language, or American Sign Language.

Fine Arts 1 year

(University of Washington and Western Washington University specify ½-credit in fine, visual, or performing arts; the other ½-credit may be in the arts or in an academic elective.)

PRIVATE 4-YEAR COLLEGES/ UNIVERSITIES

English 4 years

Mathematics 4 years

Science 2-3 years

Social Studies 3 years

World Language 2-3 years

Consecutive study of the same world language.

Academic and Arts Elective 2 years

High School General Information

CTE COURSE EQUIVALENCY CREDITS		
COURSE CODE	COURSE NAME	EQUIVALENCY CREDIT
CT_424	Metals Technology 1	.5 Fine Arts
CT_524	Metals Technology 2	.5 Fine Arts
CT_417	Digital Media Production 1	Art; varies by school
CT_517	Digital Media Production 2	Art; varies by school
CT_519	Computer Graphics 1	.5 Fine Arts
CT_619	Computer Graphics 2	.5 Fine Arts
CT_412	Photography 1	.5 Fine Arts
CT_512	Photography 2	.5 Fine Arts
CT_440	Floral Design 1	.5 Fine Arts
CT_540	Floral Design 2	.5 Fine Arts
CT_471	Economics	.5 Social Studies Elective
CT_541	Nursery & Greenhouse Operations	1.0 Lab Science
CT_661	Automotive Technology 1	1.0 Lab Science
CT_761	Automotive Technology 2	1.0 Lab Science
CTA_504	AP Computer Science Principles	1.0 Math
CTA_612	AP Photography Portfolio Design/2-D Design	1.0 Fine Arts
TH_411	Technical Theatre	1.0 Fine Arts
CT_635	Health Science Careers	1.0 Lab Science; .5 Health
SC_506	Anatomy & Physiology	1.0 Lab Science
SC_602	Biotechnology	1.0 Lab Science
CTA505H	AP Computer Science	1.0 Math
CT_610	Building Industry Technologies--Core Plus Construction	1.0 Math credit (3rd year); 1.0 Lab Science
CT_442	Environmental Sustainability	1.0 Lab Science
CTA470	AP Micro/Macroeconomics	1.0 Social Studies Elective

HIGHLY SELECTIVE COLLEGES/UNIVERSITIES

College Admission officers pay particular attention to the rigor of the student's program.

English 4 years

Mathematics 4 years

Science 3-4 years

With laboratory courses

Social Studies 3-4 years

World Language 3-4 years

Consecutive study of the same world language.

Academic and Arts Elective 2-3 years

COMMUNITY COLLEGES/ TECHNICAL PROGRAMS

Admission requirements vary from "open-door" policy to selective course expectations for specific programs.

FURTHER CREDIT INFORMATION

DIRECTED ATHLETICS PE/ FITNESS CREDIT FOR SCHOOL ATHLETICS & COMMUNITY BASED ATHLETICS AND ACTIVITIES

Students in grades 10-12 may earn up to .5 of the required 1.5 Physical Education credits by participating in school sports, cheerleading and drill or by participating in approved community based sports or activities. A full school sport season or 80 hours

of community based activity in a 90-day period qualifies for .5 credit. Students must complete and submit a request form for approval within the academic year of the involvement of the school sport or community activity and complete an assessment for the knowledge portion of the fitness requirement. There is a nominal fee charged for each assessment.

ELIGIBILITY FOR ATHLETICS/ACTIVITIES

Students are required to maintain a 2.0 cumulative grade point average (GPA) in the semester preceding participation in order to participate in a sport and/or activity. Students who do not initially meet this expectation will be granted a probationary period

High School General Information

(during the sport/activity season) to show that progress is being made to reach this standard. During the probationary period, any student may practice, but only those who demonstrate progress may compete.

WORLD LANGUAGE COMPETENCY CREDITS

Competency based credits may be earned for World Language:

A maximum of 4 World Language credits may be awarded through OSPI's Competency Based Credit testing process. Not all colleges accept competency credits to meet their World Language requirement for entrance. Students cannot receive competency credits for courses taken nor take courses they have received competency credits. More information is available here: <http://www.bsd405.org/departments/curriculum/competency-credits/>

In order to earn competency credits in World Language, students will demonstrate proficiency in speaking, listening, reading and writing. These assessments are aligned with the American Council on the Teaching of Foreign Languages (ACTFL) Proficiency Levels.

The assessments vary by Language. For Spanish, French, German, Italian, Hebrew, Japanese and Chinese students may take the Standards-Based Measurement of Proficiency (STAMP) test. Students receive credit based on their lowest score of the 4 skill areas.

- » Novice Mid- 1 credit
- » Novice High- 2 credits
- » Intermediate Low- 3 credits
- » Intermediate Mid or Above- 4 credits

Not all colleges accept competency credits to meet their World Language requirement for entrance.

CREDITS TAKEN OUTSIDE OF THE BELLEVUE SCHOOL DISTRICT

There are some instances when students may be granted credit (not necessarily a grade) for learning experiences outside the district, provided the learning experiences are within the procedures established by the District, which includes meeting Common Core State Standards and alignment with District curriculum. In order to be granted credit, students must obtain district approval prior to enrollment and/or participation in the outside learning experience. Students must obtain, complete, and submit the form labeled "Student Request For Approval For Learning Experiences Outside The Bellevue School District". Please visit the counseling center to obtain the required form. Should the proposal be approved, students must have been, and continue to be, fully scheduled in a Bellevue School District high school, taking the maximum credits offered during the regular school day. Students may not drop a course and/or shorten their schedule in order to have a learning experience outside the regular program.

Please see BSD policy 2410, 2410P and 2410 Exhibit A.

WITHDRAWAL GRADES

A "W" grade will be posted to a student's transcript if the course is dropped after the first 10 days but before the 30th day of the semester. At the quarter, a .25 credit and grade will be posted to transcript if the course is dropped mid-semester. Students who change levels in an academic area or change from one elective to another elective in the same area will receive .5 credit and grade at the end of the semester. Students who change from one course to another course in a different academic area will receive a withdrawal grade of "W" or .25 credit and grade depending on the drop date. The principal makes the final determination of the grade mark to be posted to the transcript.

WAIVING COURSE REQUIREMENTS

Students may have courses waived if they meet certain criteria. In order to apply for a course waiver, students complete and submit to the counselor the Waiver of a Course Requirement form. The counselor will document that he/she has seen the form and supporting documents and write comments/insights to be considered in the decision and then forward the form to the principal. The principal will review the form and add any additional comments/insights and forward the request to the Director of Teaching & Learning or designee. The Director of Teaching & Learning or designee will either grant approval for the course waiver requirement or deny the request, citing reasons for the denial. The completed form will then be sent to the student's counselor for review of the results with the student.

EARLY GRADUATION

Early graduation from high school is appropriate for some students. Plans for early graduation must be made cooperatively between the student, parent(s), and school. Any student contemplating early graduation should initiate a request and complete a plan with his/her counselor. The plan must be submitted for approval to the principal. This should be done, at the latest, prior to registration for the year during which the student plans to graduate.

Creators of your Future World

RIGOROUS COURSEWORK & COLLEGE CREDIT OPTIONS FOR HIGH SCHOOL STUDENTS

The choices you make now are important building blocks to future learning. By taking college-level **Advanced Placement (AP)**, **International Baccalaureate (IB)**, **College in the High School**, **Running Start** or **PNW College/WANIC** classes in high school, you enter a world of knowledge and a learning environment that you might not otherwise experience.

WHY SHOULD YOU SIGN UP FOR THESE TYPE OF COURSES?

The greatest benefit of any of these programs is the experience of taking academic courses in an enriched environment with classmates who, like you, are seeking intellectual challenge, are motivated to learn, and are committed to excellence. Participating in these courses is going to give you a head start on exactly the sort of work you will experience in college. You will improve your writing skills and sharpen your problem-solving techniques; develop the study habits necessary for tackling rigorous coursework; assume the responsibility of reasoning, analyzing, and understanding for yourself; and study subjects in greater depth and detail.

ADVANCED PLACEMENT

All students are encouraged to seriously consider enrollment in one or more AP courses during 10th, 11th and 12th grades. AP courses are also available to students in 9th grade.

These courses are offered in all our high schools. While the availability of classes differs among the schools, in Bellevue School District we offer over 35 different AP courses ranging from English, US History, and Psychology to Statistics, Calculus, Biology, Chemistry, and Computer Science to Spanish Language, Music Theory and Art Portfolio. We try to provide a broad selection of courses to appeal to a wide variety of student interests.

Advanced Placement courses are college-level courses offered in high school. AP courses include extensive reading. Students in AP courses may earn college credit if they perform well on rigorous national AP tests.

Ask your counselor for assistance in selecting courses that will prepare you for success in any AP course that interests you. Additional information about the AP program is found in the AP information section.

INTERNATIONAL BACCALAUREATE DIPLOMA

The International Baccalaureate (IB) Program, located at Interlake High School, is recognized internationally as a rigorous and comprehensive curriculum, designed to challenge college-bound students. The IB program's broad range of subjects accommodates diverse student interests and intentions while adhering to the objectives of a cohesive liberal arts education. IB courses are college-level courses offered in high school which includes frequent homework and involves extensive reading. Students in IB courses may earn college credit or advanced placement if they perform well on rigorous IB tests. For more information see specific course

descriptions or talk to an Interlake counselor.

PACIFIC NW COLLEGE CREDIT & WANIC

Pacific NW College Credit and WANIC are programs that combine secondary and post-secondary programs of integrated courses allowing high school students to begin a Career and Technical Education program that leads to a two-year Associate degree, a two-year certificate, and/or a four-year Baccalaureate degree.

These courses are marked with a College Credit symbol in the course descriptions.

COLLEGE IN THE HIGH SCHOOL

This program provides 9th through 12th grade high school students the opportunity to earn college credit in approved high school courses. BSD offers many courses in math with some course offerings in English, World Language, Science, and Social Studies. These courses most often meet college or university 'general university requirements' (GUR) for college graduation. Please check with the institutions you are considering on attending to determine if these credits will be accepted for advancement.

Due to changes in state law which connects college crediting to high school credit some courses maybe credited beyond the 0.5 credit/semester/period that is typical. For example, some 1 period courses may be worth 2 high school credits. This information can be found in the Length/Credit section in the description and are marked with a College Credit Symbol.

Additional CHS information:

- » There is no fee for students to enroll in a CHS or co-delivered dual credit course that includes CHS to earn only high school credit. Fees apply only for students who choose to enroll in a CHS course to earn both high school and college credit.
- » Fees for College in the High School courses will vary by the number of credits and the institution. BSD currently has 3 different partner institution. For each course you can calculate the total cost by multiply the number of college credits by the cost per credit below:
 - Bellevue College** - \$40/credit
 - Edmonds College** - \$43/credit
 - University of Washington** - \$66/credit & one-time \$45 registration fee
- » College in the High School credits are substantially less in cost than direct cost to the college. Cost are between 35% to 17% of in-person attendance at our partner colleges. Students needing financial assistance should contact their school teacher and school counselor to see what resources are available to students.
- » Paying for the college credit automatically starts an official college transcript with the institution offering the course. The college transcript is a permanent record which will record the credits earned and the grade received.

If a student attends another college or university after high school graduation, the new school may count the credits as elective or academic credit depending on the receiving college's transfer credit policies. Many colleges and universities have a list or online tool for you to check the transfer equivalencies and your counselor can support with local university searches.

RUNNING START

Current Washington State legislation allows high school students to attend their local community college or technical school and earn high school credits and college credits at the same time. There are no tuition fees for the student if the number of credits does not exceed the maximum allowed.

Students enrolled in Running Start must:

- » Have junior or senior standing in high school
- » Make application to the program during the enrollment period for Bellevue College in March prior to the fall quarter the student wishes to attend
- » Sign a Bellevue School District Running Start contract with parent(s)/guardian(s)
- » Enroll in courses that are approved by the high school counselor so that graduation requirements are completed in conjunction with any college coursework that may lead to an Associate Arts degree. The student should also maintain fulltime enrollment of a minimum of 15 credits so that the student's graduation status is not jeopardized
- » Be responsible for knowing the registrations date(s) and deadline(s) for district and college course registration
- » Be responsible for transportation, lab fees and books.

HIGH SCHOOL FOUR-YEAR EDUCATIONAL PLAN

On the following pages are important worksheets to help you plan the courses you will take in high school. Please be aware that your post-high school plans for college, employment, or career training may require courses beyond the graduation requirements. Also, if you want to finish up your high school program with some Advanced Placement or advanced level vocational courses, you need to register for the necessary prerequisite classes during 9th, 10th, and 11th grade.