

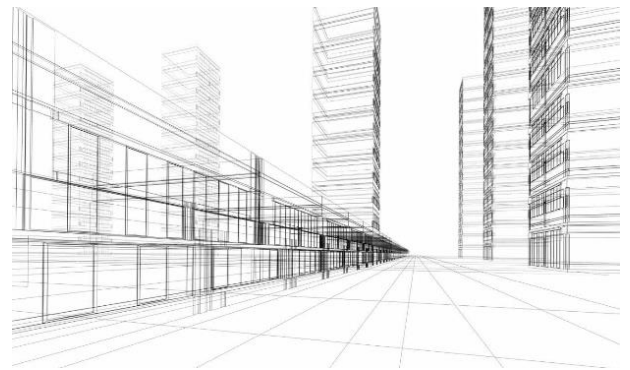
Bellevue School District

Growth and Planning Community Advisory Group

The Bellevue School District is establishing a Growth & Planning Community Advisory Group to formulate a long-term facility strategy for the district informed by enrollment trends, community expectations and district programs. The facility strategy will align with the District's upcoming 5-year strategic plan and propose infrastructure changes to meet the needs of our schools and the broader community.

Membership

Advisory group members will be selected based on areas of expertise and will represent a cross section of our stakeholders.



Commitment

16- Months Total
June 2018 – September 2019
Monthly 2 Hour Meetings
Members are expected to attend all meetings

Interested?

Find more information and the application here: <https://bsd405.org/get-involved/community-advisory-groups/>

We are seeking applicants with backgrounds in real estate, finance, planning and operations as well as parents representing schools and educational programs.

Timeline

Strategy

- June 19, 2018: Intro Meeting
- Fall 2018: Background and plan development
- Spring 2019: Community Engagement
- Summer 2019: Draft Board Recommendations
- Fall 2019: Board consideration of bond election

School attendance boundaries WILL NOT be considered as part of this process.